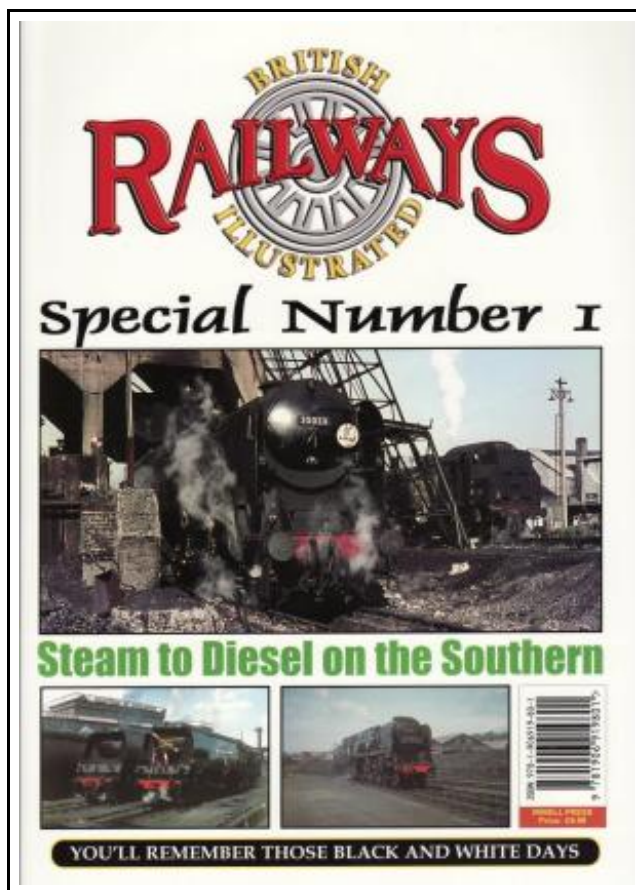


## British Railways Illustrated Special Number 1 : Steam to Diesel on the Southern



Filesize: 3.06 MB

### **Reviews**

*It is one of the most popular pdfs. It really is full of knowledge and wisdom. It has been developed in an exceptionally easy way and it is just right after I finished reading through this publication by which it really altered me, altered the way in my opinion.*

*(Dr. Alexa Rogahn)*

## BRITISH RAILWAYS ILLUSTRATED SPECIAL NUMBER 1 : STEAM TO DIESEL ON THE SOUTHERN



Irwell Press, Clophill, Bedfordshire, England, 2015. Soft Cover. Book Condition: New. No Jacket. First Edition. 79 pages b/w photos - British Railways organised its sheds - to be designated Motive Power Depots - on the LMS model established in the 1930s. This in theory had a concentration depot at the head of a Motive Power District with an A code and subordinate garage depots. Repairs and maintenance would be, literally, concentrated on the concentration depot while the garages served in a way that their title suggested, with much less attention carried out. Even on the LMS, however, anomalies abounded, in which the A shed possessed little in respect of repair facilities while nominally garage sheds were much better equipped and so it is little wonder that while, on the pages of the Ian Allan abc, the sheds of every Region seemed to arranged precisely alike, the codings often meant little more than that. Each Region had its shed codes organised on the LMS model but as for the activities at the sheds themselves, these went on much as they had done under the Southern, GWR, LNER and indeed much as they had done on the pre-Group companies that had preceded them. So it was that in London 73A East met 70A West curiously within a short stroll of each other, in a somewhat down at heel corner of London near to the Thames. The old LSW lines and the terminus at Waterloo were served by the ancient and rambling premises at Nine Elms while the principal shed for the old Brighton and Chatham sections had emerged as Stewarts Lane. More or less the entire range of Southern locomotives could be found at one time or another in this closely confined area of Battersea and it is principally through the mirror...



[Read British Railways Illustrated Special Number 1 : Steam to Diesel on the Southern Online](#)



[Download PDF British Railways Illustrated Special Number 1 : Steam to Diesel on the Southern](#)

## You May Also Like

---



### **A Dog of Flanders: Unabridged; In Easy-to-Read Type (Dover Children's Thrift Classics)**

Dover Publications, 2011. Paperback. Book Condition: New. No Jacket. New paperback book copy of A Dog of Flanders by Ouida (Marie Louise de la Ramee). Unabridged in easy to read type. Dover Children's Thrift Classic...

[Save Book >](#)

---



### **Meg Follows a Dream: The Fight for Freedom 1844 (Sisters in Time Series 11)**

Barbour Publishing, Inc., 2004. Paperback. Book Condition: New. No Jacket. New paperback book copy of Meg Follows a Dream: The Fight for Freedom 1844 by Norma Jean Lutz. Sisters in Time series book 11. Christian...

[Save Book >](#)

---



### **Sarah's New World: The Mayflower Adventure 1620 (Sisters in Time Series 1)**

Barbour Publishing, Inc., 2004. Paperback. Book Condition: New. No Jacket. New paperback book copy of Sarah's New World: The Mayflower Adventure 1620 by Colleen L. Reece. Sisters in Time Series book 1. Christian stories for...

[Save Book >](#)

---



### **Anna's Fight for Hope: The Great Depression 1931 (Sisters in Time Series 20)**

Barbour Publishing, Inc., 2004. Paperback. Book Condition: New. No Jacket. New paperback book copy of Anna's Fight for Hope: The Great Depression 1931 (Sisters in Time Series 20). Publisher recommended for ages 8 to 12...

[Save Book >](#)

---



### **Cloudy With a Chance of Meatballs**

Atheneum Books for Young Readers, 1982. Paperback. Book Condition: New. No Jacket. New paperback print book copy of Cloudy with a Chance of Meatballs written by Judi Barrett. Drawn by Ron Barrett. New York: Athenium...

[Save Book >](#)